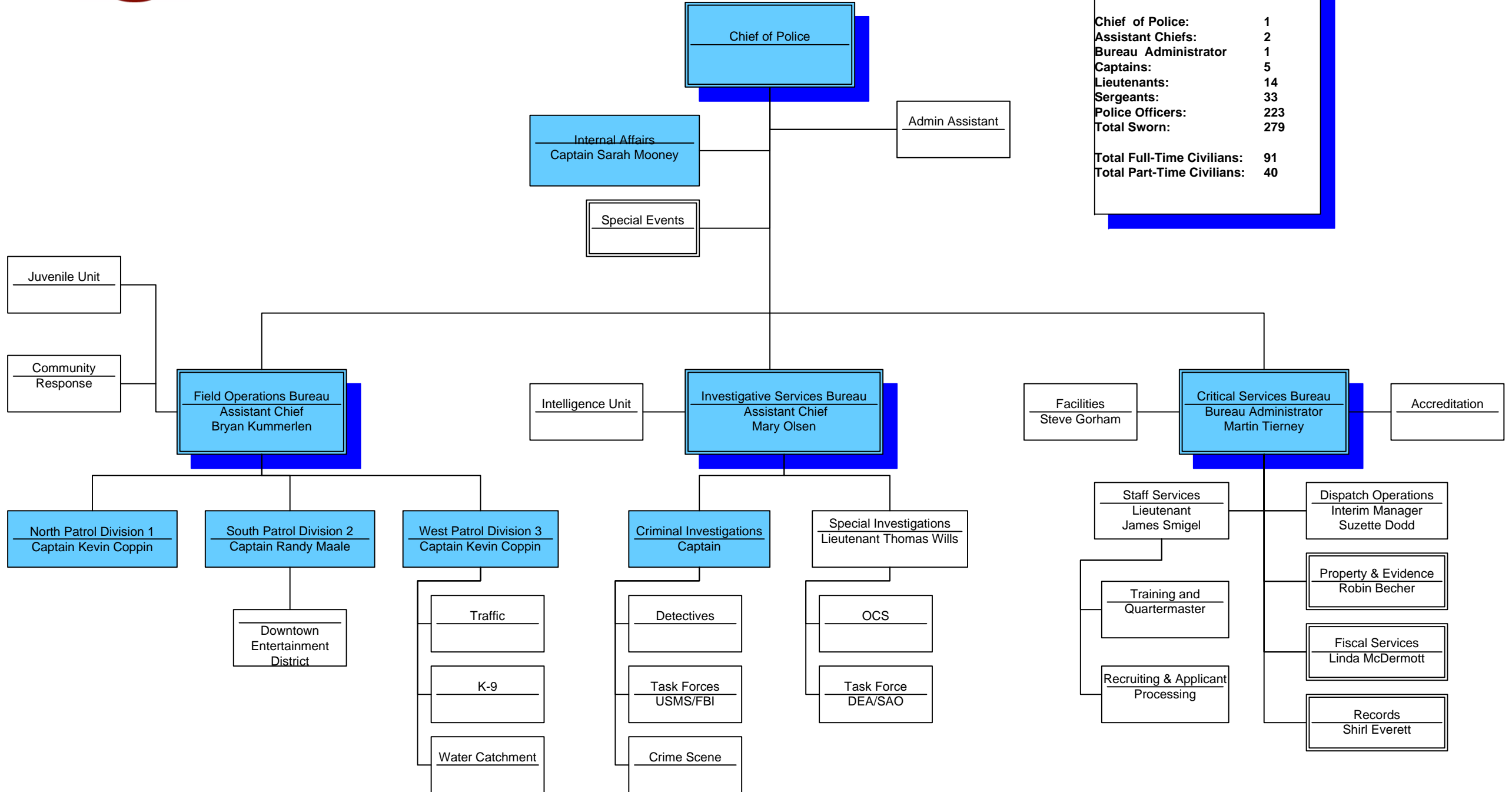




# West Palm Beach Police Department

## Organizational Chart

October 2011



STAFFING (All Cost Centers)	
Chief of Police:	1
Assistant Chiefs:	2
Bureau Administrator:	1
Captains:	5
Lieutenants:	14
Sergeants:	33
Police Officers:	223
<b>Total Sworn:</b>	<b>279</b>
<b>Total Full-Time Civilians:</b>	<b>91</b>
<b>Total Part-Time Civilians:</b>	<b>40</b>