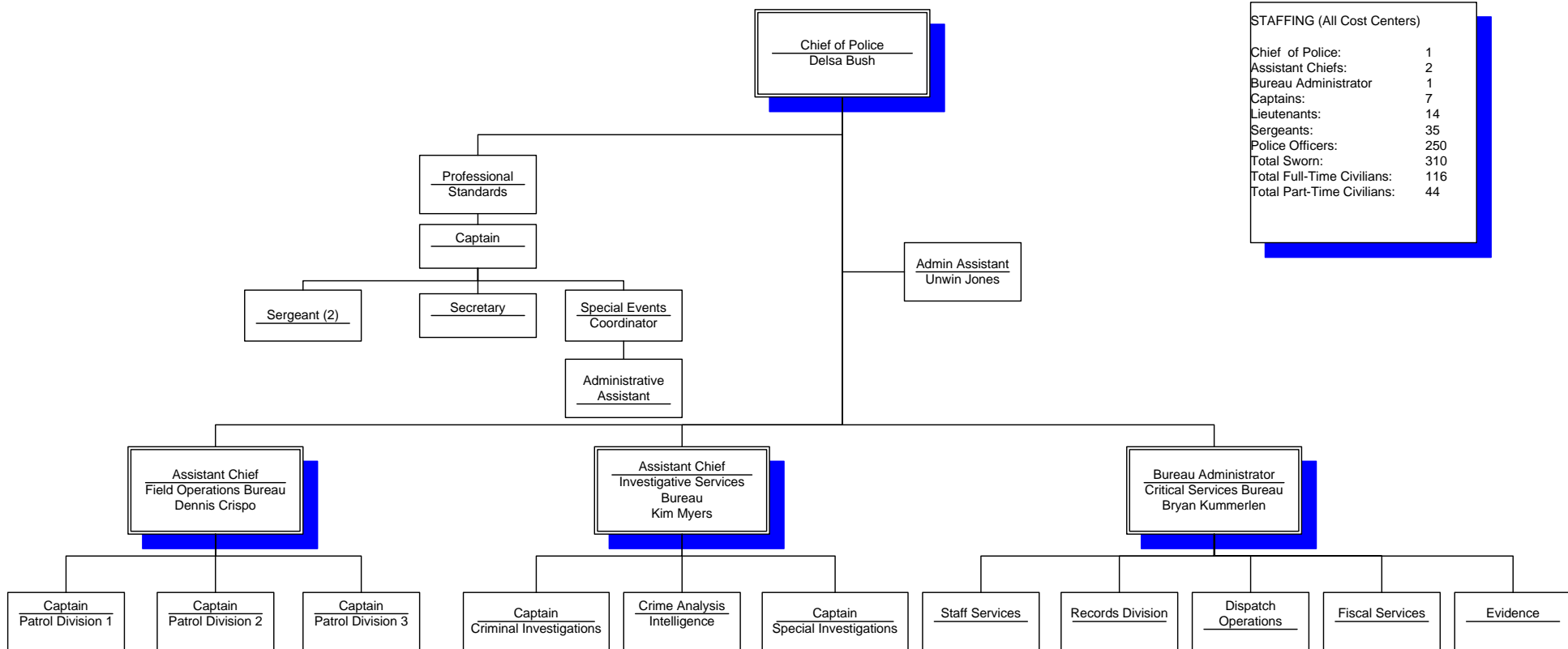




West Palm Beach Police Department Organizational Chart 2009



STAFFING (All Cost Centers)	
Chief of Police:	1
Assistant Chiefs:	2
Bureau Administrator	1
Captains:	7
Lieutenants:	14
Sergeants:	35
Police Officers:	250
Total Sworn:	310
Total Full-Time Civilians:	116
Total Part-Time Civilians:	44



West Palm Beach Police Department

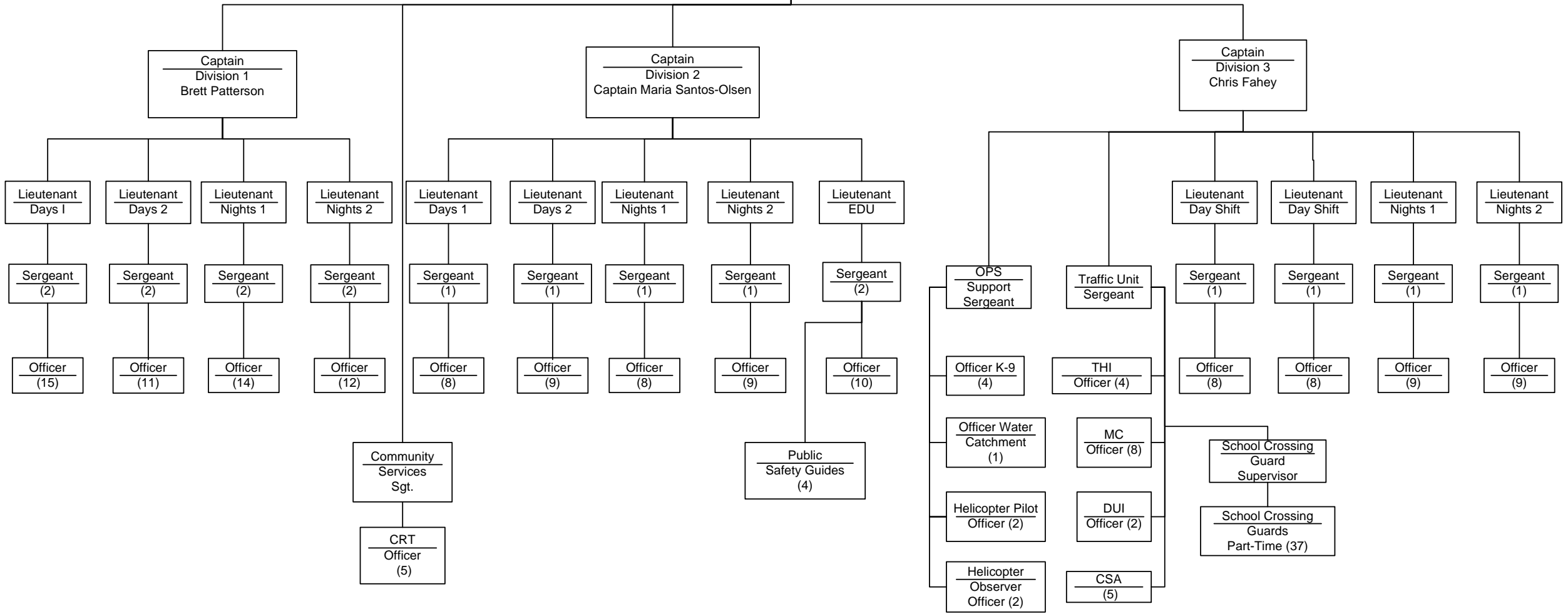
Field Operations Bureau

Monday, April 20, 2009

Assistant Chief
Field Operations Bureau
Dennis Crispo

Admin Asst

STAFFING	
Field Operations Bureau	
Assistant Chiefs:	1
Captains:	3
Lieutenants:	10
Sergeants:	20
Police Officers:	174
Total Sworn:	208
Total Full-Time Civilians:	11
Total Part-Time Civilians:	37





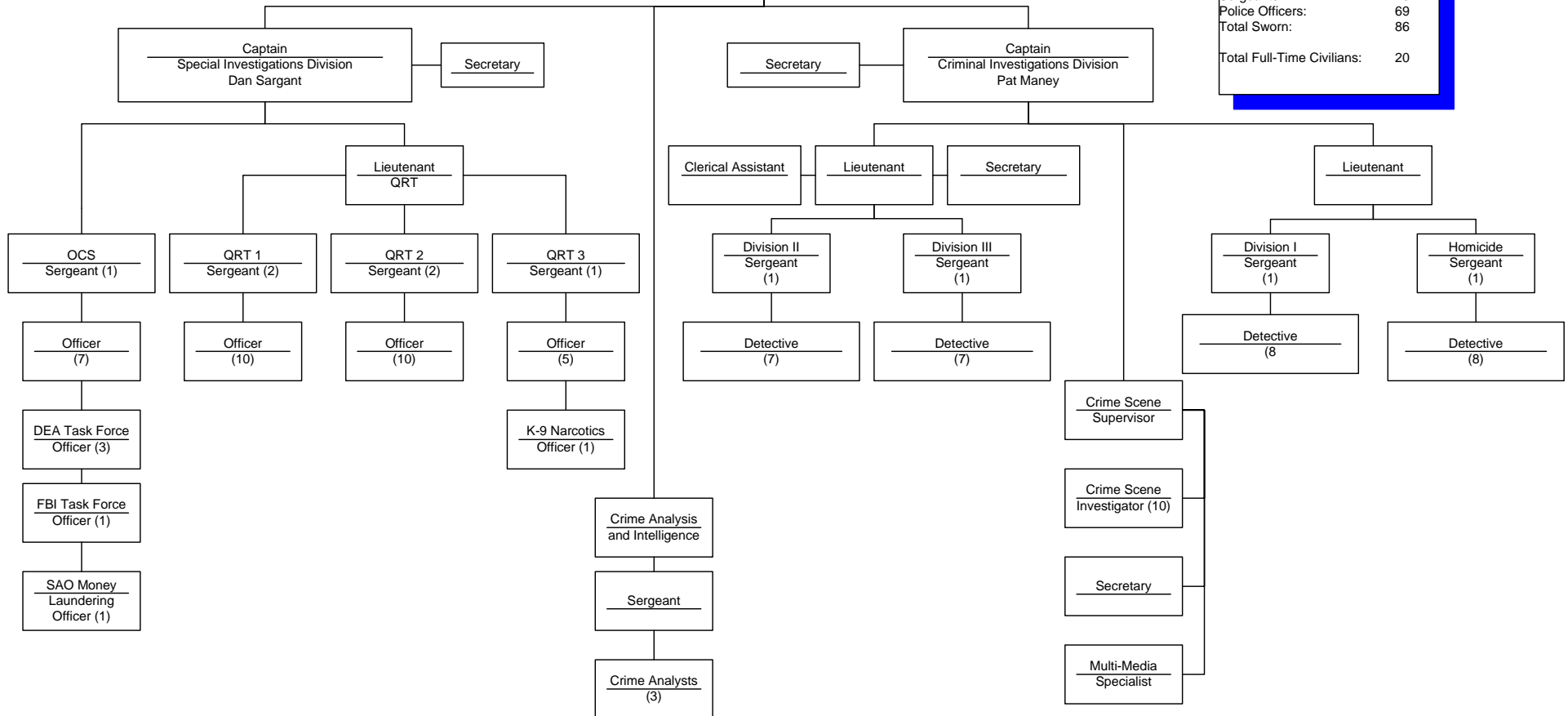
West Palm Beach Police Department

Investigative Services Bureau

Monday, April 20, 2009

Assistant Chief
Investigative Services Bureau
Kim Myers

STAFFING	
Investigative Services Bureau	
Assistant Chiefs:	1
Captains:	2
Lieutenants:	4
Sergeants:	10
Police Officers:	69
Total Sworn:	86
Total Full-Time Civilians:	20





West Palm Beach Police Department
 Critical Services Bureau
 Monday, April 20, 2009



STAFFING	
Critical Services Bureau	
Bureau Administrator	1
Lieutenant	1
Sergeant	3
Officers	15
Total Full-Time Civilians:	81
Total Part-Time Civilians:	3
TOTAL	104

